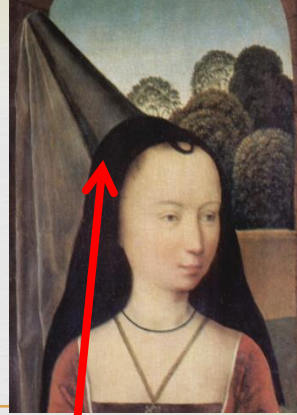


Late Middle Ages

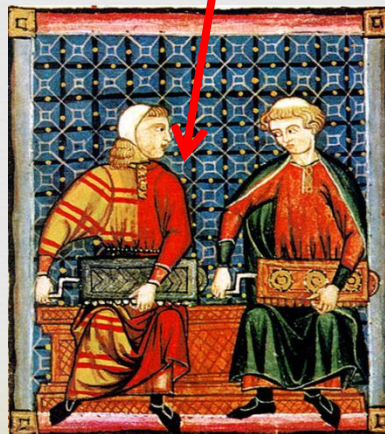
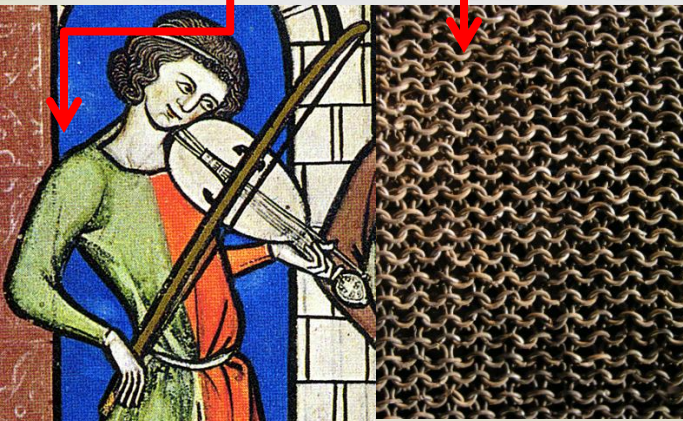


c. 1300 - 1500

Garments & Terminology to Know - 14th Century:



- ☞ **Chain Mail** - interlinking rings of metal formed into shirts and hoods; worn as armor
- ☞ **Hennin** - the stereotypical “Princess Hat” that looks much like a cone or steeple on the wearer’s head
- ☞ **Doublet** - a man's short close-fitting padded jacket; originally worn under plate armor
- ☞ **Parti-Colors** - contrasting colors used in clothing to identify the family to which the wearer belongs

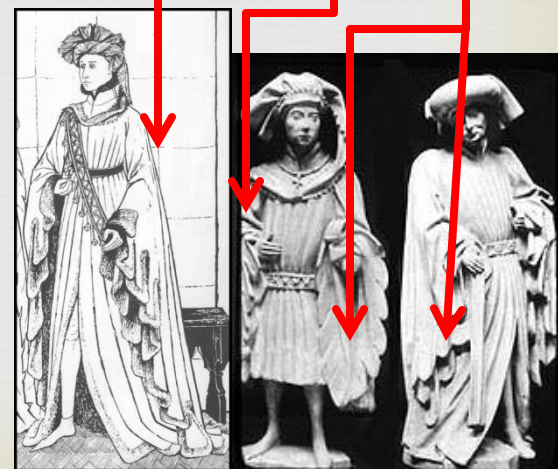
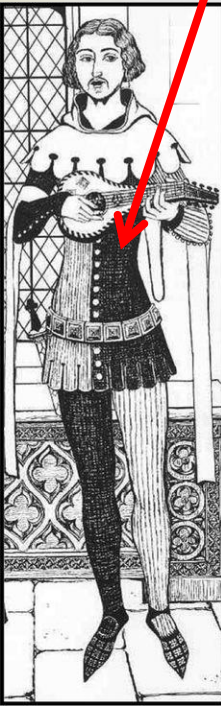




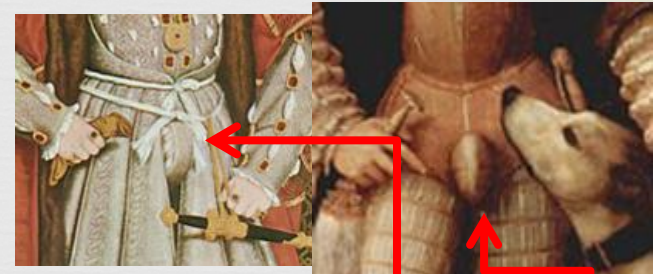
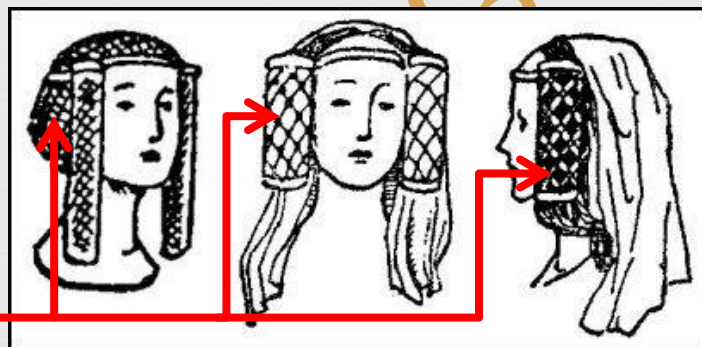
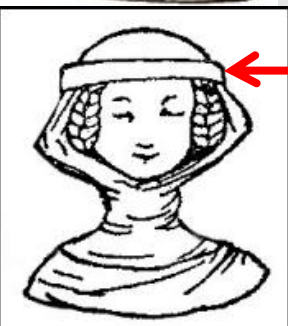
Garments & Terminology to Know - 14th Century:

∞

- ∞ **Cotehardie** – unisex garment, tailored to fit the torso and arms, usually with a row of buttons down the front as well as down each fitted sleeve from the elbow to the wrist.
- ∞ **Dagging** – a series of decorative scallops or foliations along the edge of a garment
- ∞ **Houppelande** – fur-lined garment, pleated & belted at the waist with various sleeve and hem lengths
- ∞ **Poulaines** – fabric or leather shoes with long, pointed toes
- ∞ **Gown** – outer garment with varying sleeves and hem lengths
- ∞ **Plastron** – hardened front panel that develops as part of the sideless surcote; attached to skirt by hardened straps at waist



Garments & Terminology to Know - 14th & 15th Century :



- ☞ **Fillet** - a type of headband worn by unmarried women, usually with a wimple
- ☞ **Fret** - a hair net, sometimes made of metal/wire
- ☞ **Codpiece** - a flap/pouch that attaches to the front of the crotch of men's breeches, closed by ties or buttons
- ☞ **Bowl Crop** - hair style in which the sides/back of the head are shaven while the hair on top is left long, creating a bowl shape
- ☞ **Page Boy** - straight hair hanging to below the ear with bangs in the front