

ELIZABETHAN ENGLAND

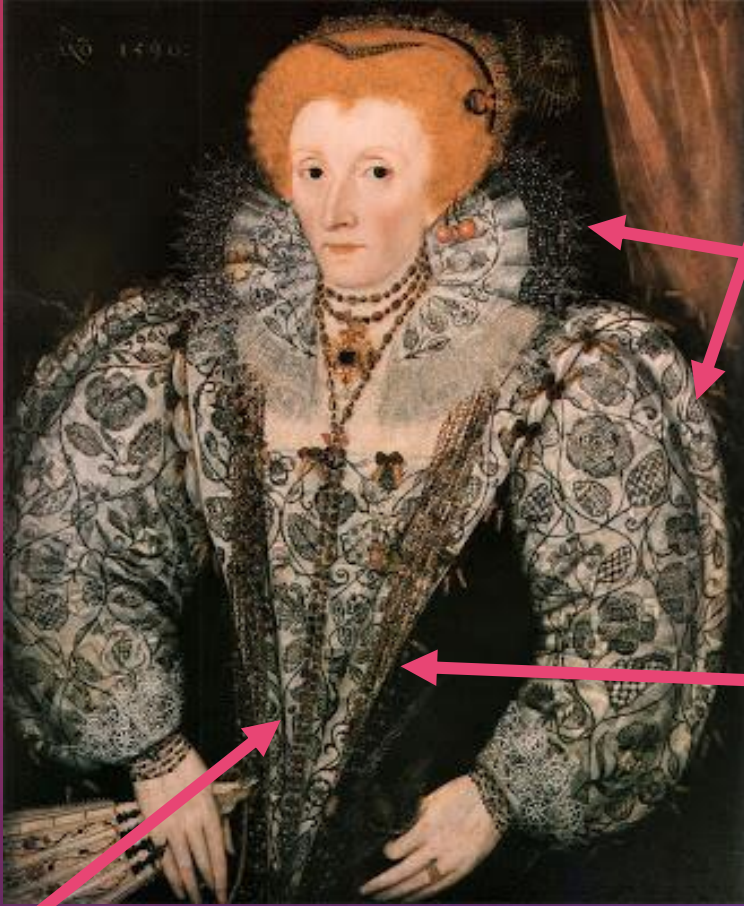
C. 1500 – 1600 A.D.



HISTORICAL BACKGROUND

- Northern Europe (especially England, Spain & Germany) is slower to participate in the Renaissance than Italy
- Along with advances in the arts & sciences, the Protestant Reformation began as religious attitudes shifted, dividing Europe in two
 - Catholics V. Protestants
- The Tudors dominated England in the 1500s
 - Henry VIII (Reigned as King 1509-1547) – English Renaissance began
 - Elizabeth I (Reigned as Queen 1558-1603) – Henry’s daughter
- Henry left the Catholic church when the Pope refused to allow his divorce from Katharine of Aragon
 - He wanted a wife that would give him a male heir
 - He started the Church of England (very similar to Roman Catholic) to secure his divorce
- Edward & Mary (two of Henry’s other children) Reigned over England 1547-1558
- Elizabeth’s reign (Known as Elizabethan England)
 - Literary Renaissance – English Theatre was born
 - William Shakespeare, Christopher Marlowe & Ben Jonson all began their dramatic writing careers during her time as queen

WOMEN



- **Spanish work**

- Black embroidery on white linen
- Originated in Spain & spread all over Europe

- **Lace (2 types)**

- Needlepoint lace – embroidering over a base of threads arranged in a pattern
- Bobbin lace – twisting & knotting threads held on a series of bobbins
- Evolved from filet & cutwork – sewing patterns on netting or cutting away fabric around an embroidered design

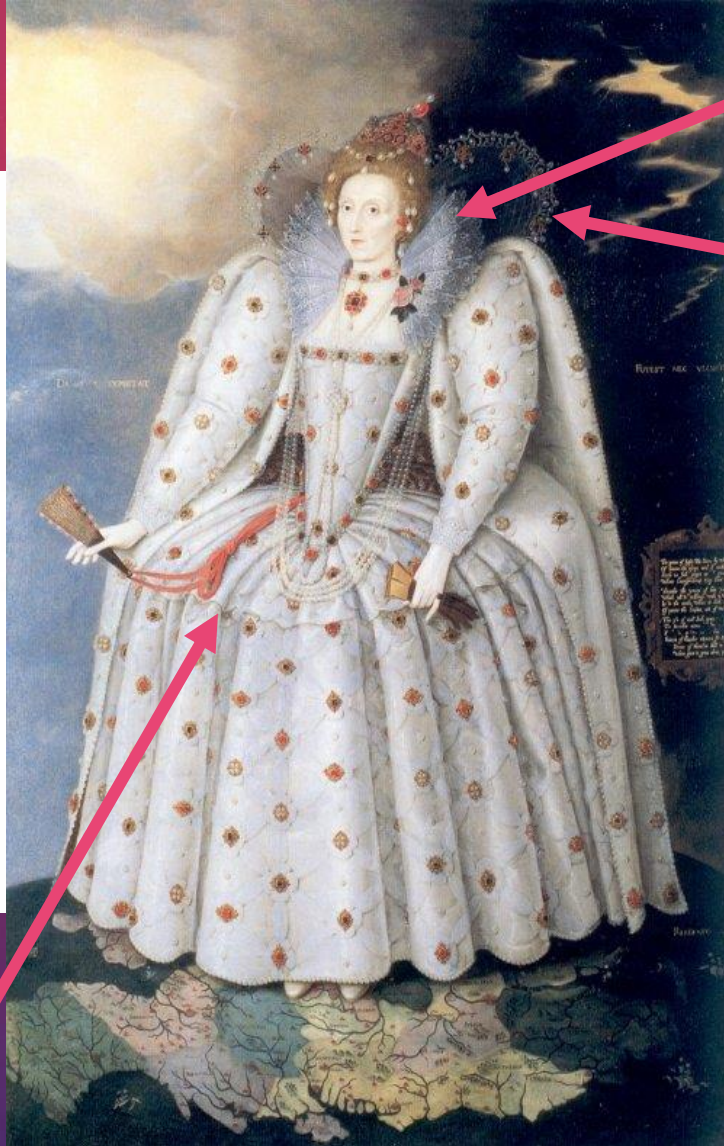
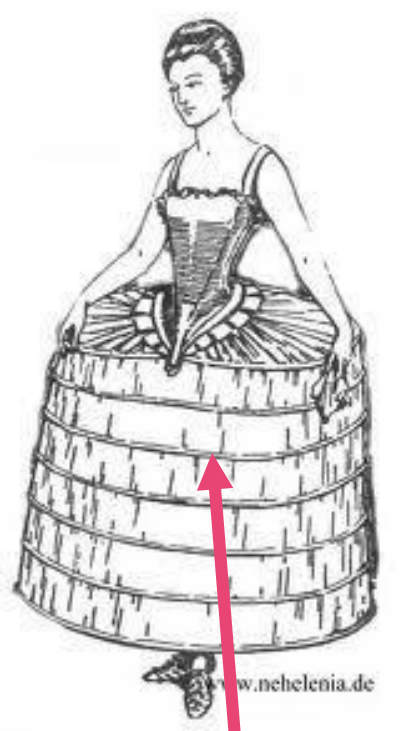
- **Stays (Underbodice)**

- Forerunner of corset
- Linen stiffened with glue & a busk (long, flat whalebone or wooden pieces) that was sewn inside the stays

- **Stomacher**

- V-shaped section in the front of bodices
- Extended to the waist or beyond
- Busk may also be inserted into it

WOMEN



- **Ruff**

- Decorative lace collar
- The largest versions were propped up by a supportasse

- **Conch**

- A thin, gauzelike veil
- Floorlength
- Attached to winglike structure behind the shoulders

- **Wheel Farthingale**

- Structural undergarment
- Consisted of graduated hoops of whalebone, cane or steel sewn into a canvas skirt
- Evolved into the “Drum” Farthingale due to the large size

MEN

- **Panes (Women Wore this Fashion Too)**

- Strips of fabric laid over contrasting under fabric
- Sometimes connected at points by brooches or ribbons

- **Stocks (AKA Hose)**

- Divide into 2 sections that were sewn together
 - Upper Stocks – Also called Breeches
 - Nether Stocks

- **Trunk Hose**

- As jackets went out of style, the Upper Stocks became large, padded breeches
- Also called “Pumpkin Breeches”

- **Breeches & Venetians**

- Breeches become a separate garment from hose
- Venetians – breeches; wide at the top & tapered to the knee

- **Doublets w/Peascod Belly**

- Doublets are most popular outer garment
- The stomach is heavily padded to resemble the puffed-out chest of a peacock

- **Pecadils**

- The rectangular flaps placed just below the waist of doublets as trim



SKETCH THESE EXAMPLES ON THE BACK OF YOUR INDEX CARD

1. Queen Elizabeth



2. Elizabethan Man

